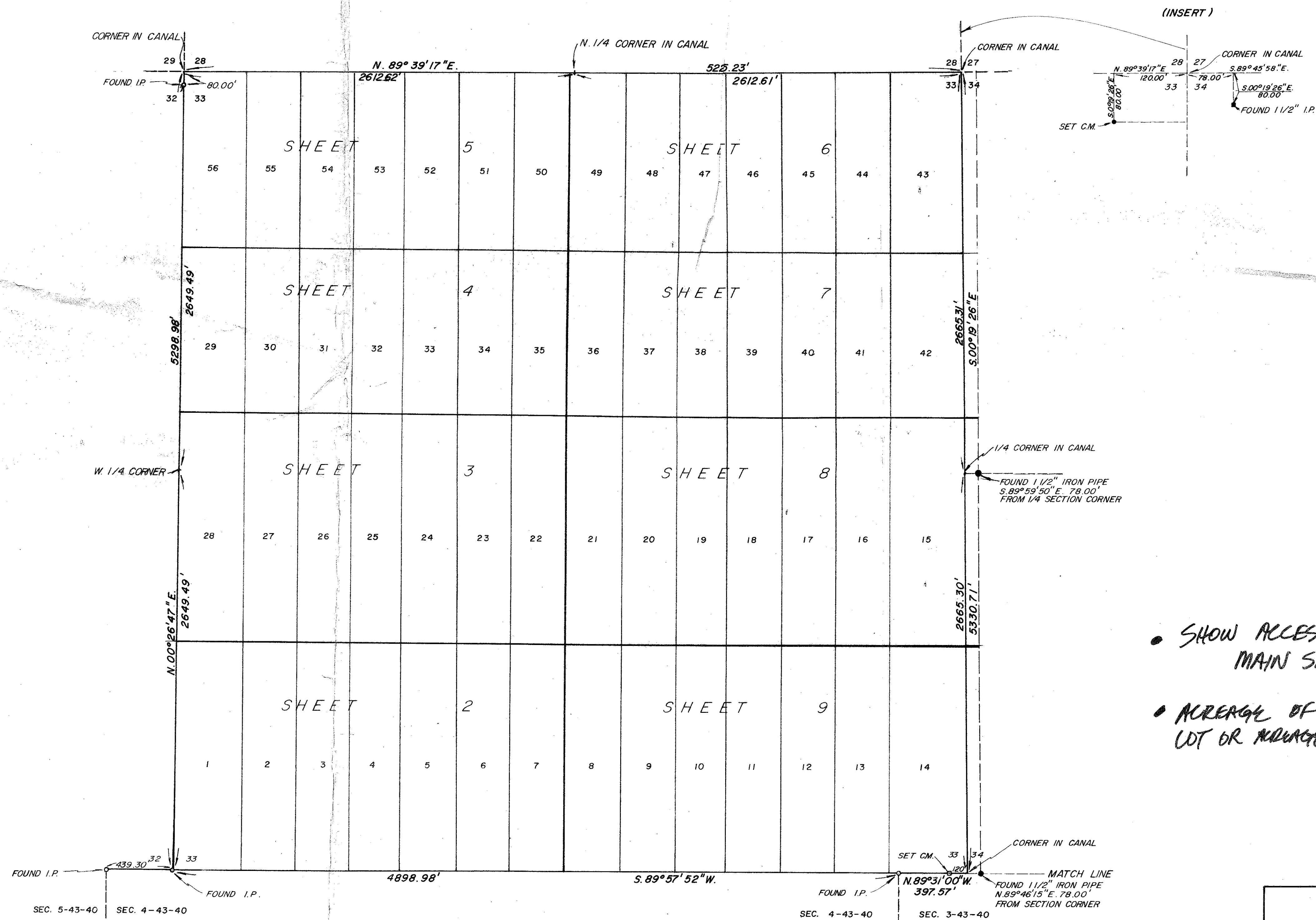


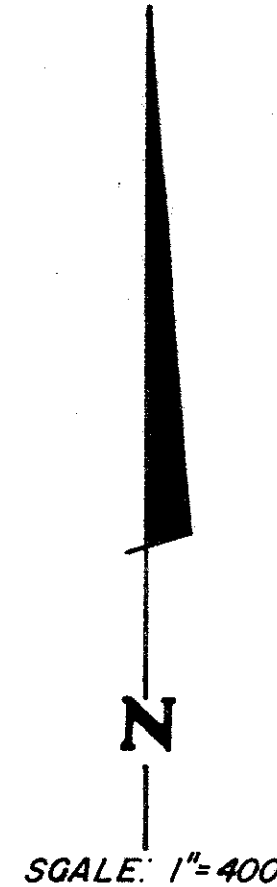
# PALM BEACH CITRUS FARMS

SECTION 33 - TOWNSHIP 42 SOUTH - RANGE 40 EAST  
PALM BEACH COUNTY, FLORIDA

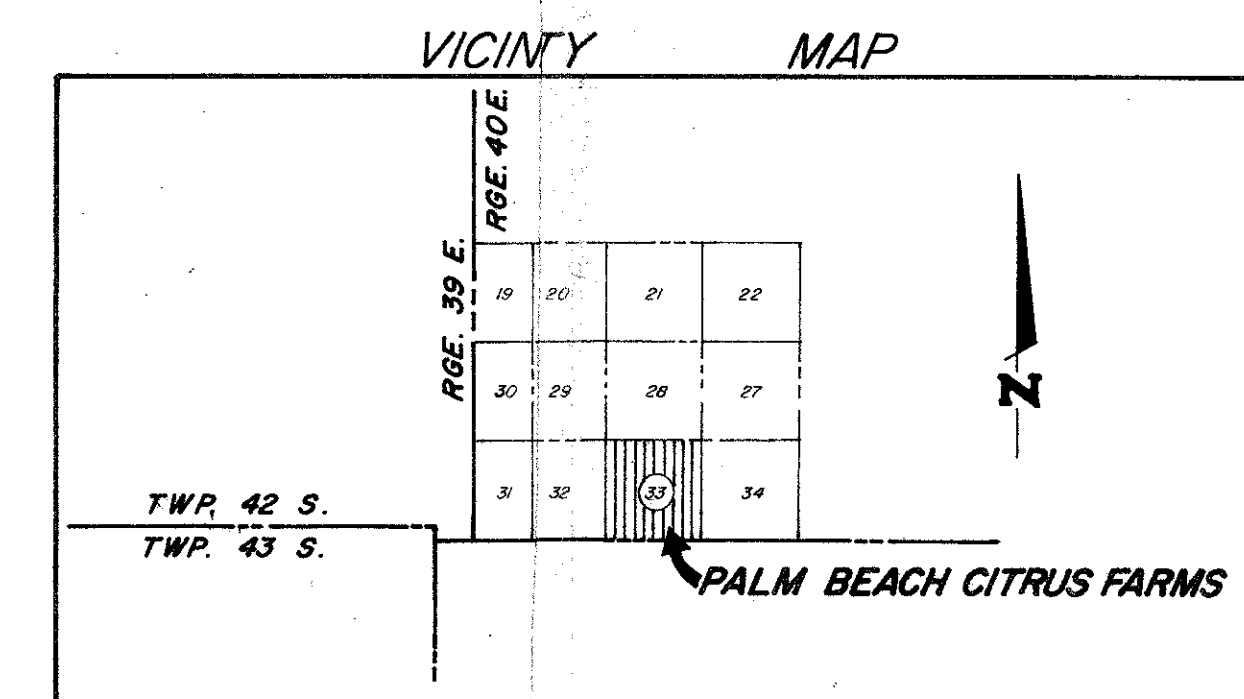


- SHOW ACCESS ON MAIN SHEET
- ACREAGE OF EACH LOT OR AVERAGE STATEMENT

DESCRIPTION: ALL OF SECTION 33 - TOWNSHIP 42 SOUTH - RANGE 40 EAST.



SCALE: 1"=400'



ur0043.igr  
PB CITRUS FARMS SHEET 1 33/42/40

I HEREBY CERTIFY THAT I HAVE MADE THE SURVEY SHOWN HEREON AND THAT IT IS TRUE AND CORRECT TO THE BEST OF MY KNOWLEDGE AND BELIEF.

*Ben Blackburn*  
BEN BLACKBURN P.L.S. 2142

RECEIVED  
JAN 16 1980  
LAND DEVELOPMENT  
PALM BEACH COUNTY